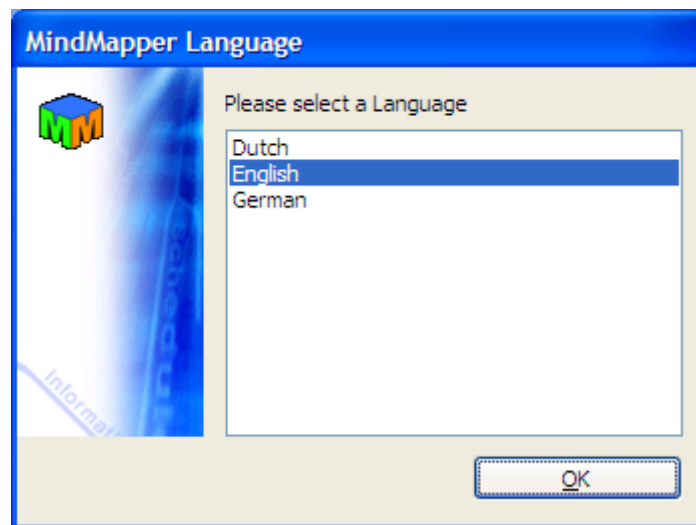


MindMapper 2008 USB User Manual

Congratulations on your purchase of MindMapper 2008 USB Edition. Now MindMapper goes wherever you go. No need to lug your laptop around everywhere to run your favorite application. Now you can just plug in your MindMapper USB into any computer and have MindMapper available anytime. Your MindMapper 2008 USB doubles as a 4GB USB storage device, so you can store your personal files as well as all your MindMapper files.

I. Insert the MindMapper USB Device

When you insert your MindMapper USB device for the first time, you will get a MindMapper Language window where you can select the default language. You can also make this language changer later.



Next, you'll see our Launcher dialog box.



Start MindMapper

Select this option to start MindMapper 2008 USB Edition right away

Open USB Folder

This opens your USB folder so you can browse through the contents

Browse Tips

Click this for help and tips

Minimize

Minimizes the MindMapper Launcher dialog to your taskbar

Your taskbar shows the MindMapper Launcher icon when minimized



Minimized MindMapper Launcher Icon

II. MindMapper Launcher Icon

Double click the MindMapper Launcher Icon to revive the Launcher Dialog Box (See Section I)

Right click on the MindMapper Launcher Icon to see more options:



Start MindMapper

Start MindMapper application

Update MindMapper

Check and Update your MindMapper USB from our website so you have the latest version

Open USB Folder

This opens your USB folder so you can browse through the contents

Open Launcher

Open the MindMapper Launcher dialog box

USB Data Backup

Backup your personal data in the USB drive to a folder in your hard drive

Recover MindMapper

User this tool to recover MindMapper if your MindMapper USB Edition becomes corrupt and does not run.



Select Language

Launch MindMapper Language dialog box so you can change the MindMapper language.

Safely Remove MindMapper USB Device

Always use this menu choice before removing your MindMapper USB Device

Help

Click this for Help and Tips

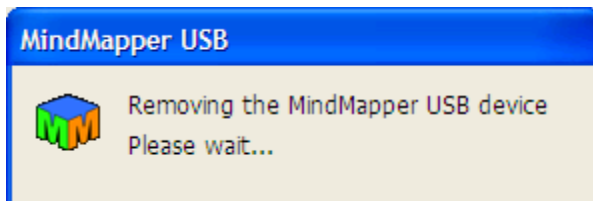
About Launcher

Information about MindMapper Launcher application

III. Removing the MindMapper USB Device

To remove your MindMapper USB device, right click on the MindMapper Launcher taskbar icon and select **“Safely Remove MindMapper USB Device”**

You will see this dialog box as the computer prepares to remove the USB device.



When it's done, you'll see this message near your taskbar. Now you may pull the USB device from your computer.

